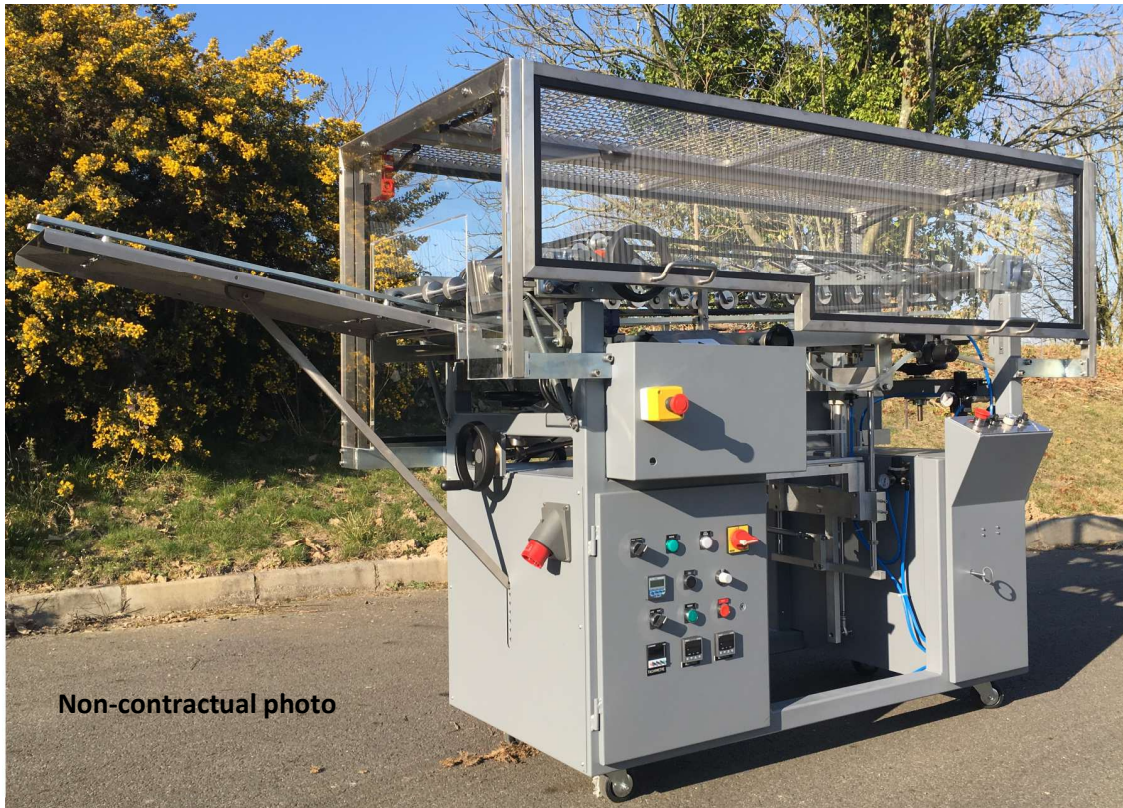


Automatic labeller – EC3010DR

High speed



Description

The horizontal automatic labeller EC3010DR is the ideal solution for quickly and accurately applying wraparound labels to a wide range of cylindrical bodies. It is perfectly suited for metal cans, cans, jars, glass bottles, aerosols, cardboard boxes, and much more.

Thanks to its design, the EC3010DR labeller offers significant time savings and allows optimal productivity in your production process. Able to withstand high speeds, it is equipped with connecting rods and bearings on rolling bearings, thus guaranteeing smooth and durable performance. It can apply labels of different sizes, with a recommended maximum of 3 formats per machine, and easily integrates with other equipment to form a fully automated production line.

Main features:

- Hot setting glue system: With digital temperature regulator, guaranteeing homogeneous and precise application of the glue.
- High-performance motorization: Equipped with a speed variator for precise adjustment of the labelling process.
- Pneumatic control: Allows labels to be raised and lowered controlled by a cylinder, ensuring maximum precision.
- Membrane pump for closure glue: Works in synergy with a product detection cell for efficient, error-free application.
- Rods & ties with bearings
- Belt drive: Double belt for stable and reliable cans movement.
- Safety: Protective guards ensure operator safety during operation. Certification according to machine directive 2006/42/EC.



Automatic labeller – EC3010DR

High speed

Technical characteristics

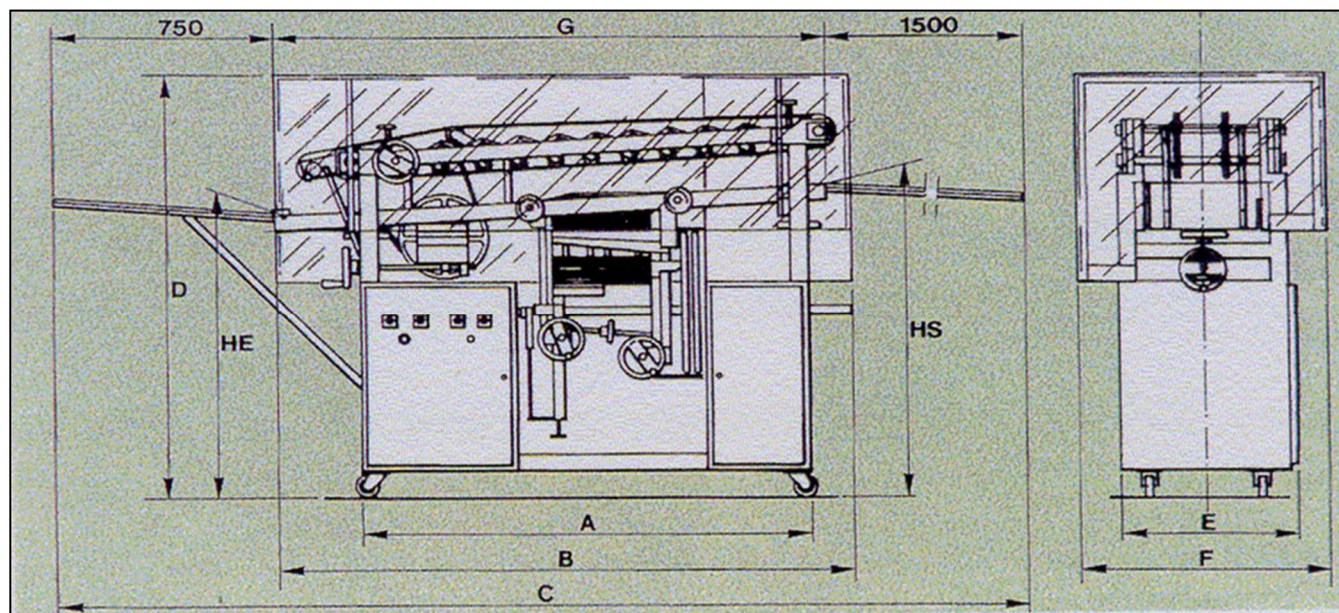
	Container dimensions				Label dimensions				Power (KW)		Max rate cans/hour
	Ø (mm)		Height (mm)		Length (mm)		Width (mm)		Motor	Resistance	
	Min	Max	Min	Max	Min	Max	Min	Max			
EC3010DR	55	102	43	275	170	335	31	267	2.2	2.4	33 000*

* depends on working conditions & format

Option

Characteristics	Description
Chantourneur	Placed at the entrance and/ or the exit of the machine, it allows to place the cans from a vertical to an horizontal position.
Double pneumatic label feeder	It enables a continuous workflow as labels are stored on 2 independent label plates. No need to stop the machine to add labels during production.
Reversed entry	The cans will enter from right to left side of the machine.
Special guides	Used for glass containers.

Dimensions (in mm)



A : 1410mm

B : 1840mm

C : 3915mm

D : 1600mm

E : 655mm

F : 850mm

G : 1665mm

HE : 1200mm

HS : 1240mm

Net weight: 400 kg

Brut weight: 530 kg

Shipping size: 2.08x1.12x1.66 m

If you are using conveyors with the chantourneurs, you need to respect :

- a descending slop of 25° between the conveyor and the entry of the machine.
- a descending slop of 25° between the exit of the machine and the conveyor.



AFU SAS
64 rue de la Ville es Cours, 35400 Saint Malo – FRANCE
Tel : +33 (0)2 99 82 14 88
E-mail : contact@duvivier-etiq-conserves.com

www.duvivier-etiq-conserves.com